



INTRUDER LC1500 STRAIGHTSHOT EXHAUST SYSTEM Part #18281

CONGRATULATIONS! You have purchased the finest exhaust system available for your motorcycle. Your VANCE & HINES exhaust system is designed for today's rider, a rider who needs maximum performance, great styling and a perfect fitting system.

REMOVING THE STOCK EXHAUST SYSTEM

1. Remove the top muffler by loosening the bolt on the pinch clamp at the pre-muffler chamber. Remove the two mounting bolts under the muffler and set the muffler aside. Save the stock hardware for reuse.
2. Remove the front head pipe by loosening the pinch clamp bolt at the pre-muffler chamber and removing the flange nut and bolt at the cylinder head. Pivot the head pipe out from the cylinder head, pull forward to remove it from the pre-muffler chamber and set it aside.
3. Remove the rear head pipe, lower muffler and pre-chamber as an assembly. Remove the flange nuts at the cylinder head and three mounting bolts from the pre-chamber, (two are accessible from the right hand side and one from the left hand side), lower the assembly down and set it aside.
4. Remove the flanged steel spacers from the three muffler/pre-muffler mounting points on the frame. Note: The VHR exhaust system does not use the two forward mounting points, the spacers will fall out if they are not removed prior to operation.
5. Remove the rubber bushing from the rear most muffler mounting point.

INSTALLING YOUR NEW VANCE & HINES EXHAUST SYSTEM

1. Install the two flanged spacers (supplied) into each side of the rear most muffler mounting point. *Refer to figure 1 on page 3.*
2. Mount the supplied muffler bracket (stamped 290) to the rear most muffler mounting point, with the flanged spacers in place. Note: *Refer to figure 1 and 2 on page 3.*
3. Install a chrome header flange (supplied) onto the front head pipe.
4. Install a chrome header flange (supplied) onto the rear head pipe.
5. Install the heat shield to the front head pipe using the hose clamps (supplied). Unscrew all of the hose clamps until they are completely loose. Feed the tail end of the hose clamp into the clips on the inside of both heat shields. Place the front head pipe into the heat shield, wrap the hose clamps around the head pipe and give the screw three to four turns, leaving the heat shield loose on the head pipe. Repeat this step with the heat shield on the rear head pipe.
Note: The screw end of the hose clamp should be accessible, but not visible when pipe is mounted on the bike.
6. Check that the stock exhaust gaskets are in good shape. If you have any doubts as to their condition, replace them.
7. Install the front head pipe with the heat shield attached, to the front cylinder using the stock nut and bolt. Leave them loose at this time.
8. Install the rear head pipe with the heat shield attached, to the rear cylinder using the stock nuts. Leave them loose at this time.

9. Slide a chrome muffler clamp (supplied) onto the inlet end of each muffler. Install a 5/16" x 1 1/4" bolt with a flat washer on either side of the clamp followed by a lock nut (hardware supplied). Do this with each muffler but leave the clamp loose at this time.
10. Slide one dog bone shaped nut plate under the bracket that is welded to each muffler.
11. Slip one muffler onto the rear head pipe. Align the bracket that is welded to the backside of the muffler with the upper two holes in the VHR muffler mounting bracket. Mount the muffler to the bracket using two 5/16"x 5/8" button head bolts (supplied), leave the bolts loose at this time.
12. Slip one muffler onto the front head pipe. Align the bracket that is welded to the backside of the muffler with the lower two holes in the VHR muffler mounting bracket. Mount the muffler to the bracket using two 5/16"x 5/8" button head bolts (supplied), leave the bolts loose at this time.
13. Align the mufflers so they're parallel when viewing from the right side of the bike, tighten the bolt which holds the muffler mounting bracket to the frame. Tighten the 5/16" button bolts on the back side of both mufflers.
14. Tighten exhaust flange bolt/nuts evenly at the cylinder head.
15. Tighten the two muffler clamps at the slip joints.
16. Rotate the hose clamps on both heat shields so they're accessible with a screw driver and tighten each of them evenly.
Important Note: The end of the heat shield should butt flush with the edge of the muffler body. If not, loosen the muffler and adjust it fore and aft until the heat shield is flush with the muffler body. *Refer to figure 3 on page 3*
17. Check to be sure there is adequate clearance between all exhaust system components and the motorcycle.
18. Wipe any finger prints or oil off of the exhaust system.
19. Be sure to tighten all hardware before starting your motorcycle.

RE-JETTING INSTRUCTIONS

Re-jetting the carburetors will result in realizing the "full" potential of this performance exhaust system. Vance & Hines offers jet kits for most applications. Base line jetting information is available through our tech-line (562-926-5291) for most models.

PLEASE NOTE: Every effort is made for Vance & Hines Exhaust Systems to provide improved cornering clearance. However, due to design and space limitations on some motorcycle models, (center stand, oil filter, oil pan etc.) ground and cornering clearance may not be improved and in some cases may be reduced. Be sure to follow proper installation instructions.

WARNING!
**VANCE & HINES DOES NOT WARRANTY ANY CHROME
PRODUCTS AGAINST DISCOLORATION.**

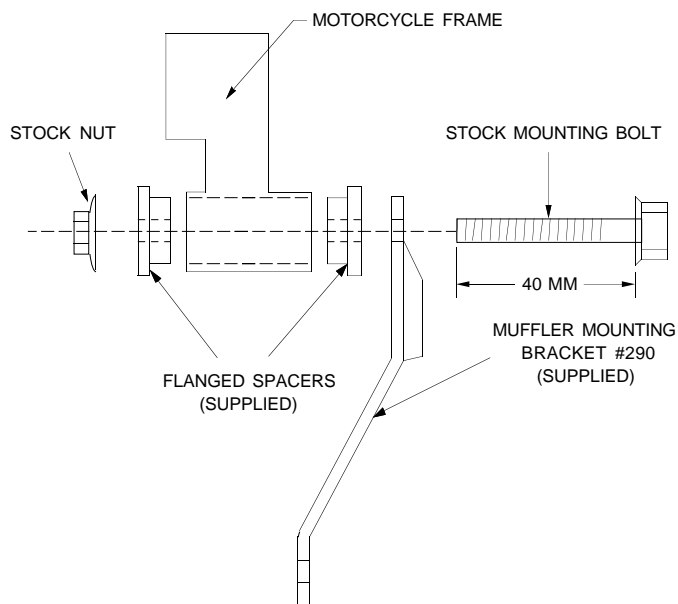


FIG. 1

VIEW FROM REAR OF MOTORCYCLE

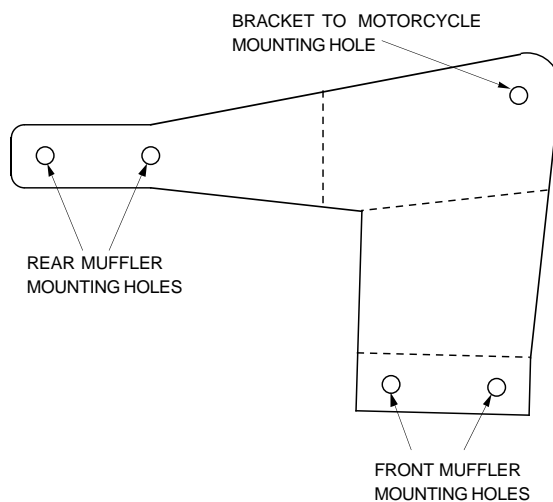


FIG. 2

VIEW FROM RIGHT HAND SIDE OF MOTORCYCLE

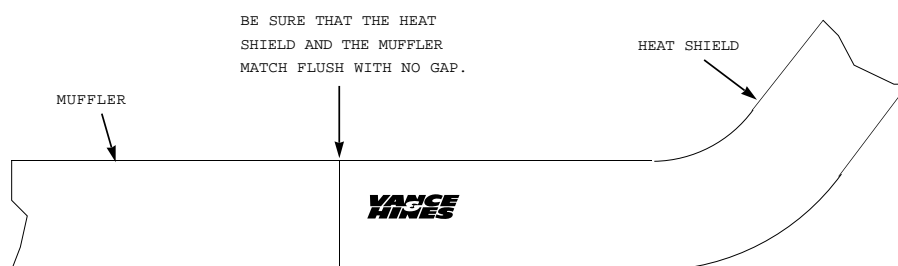
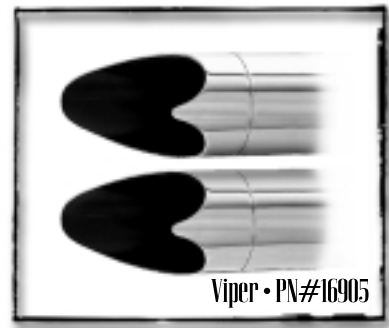
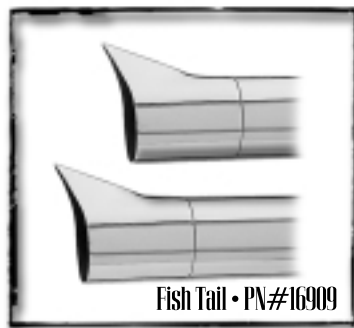
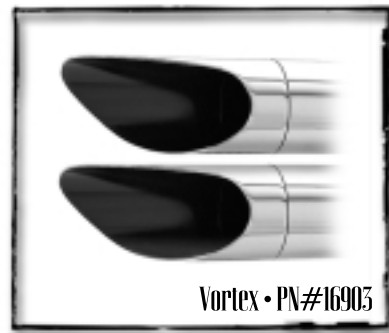
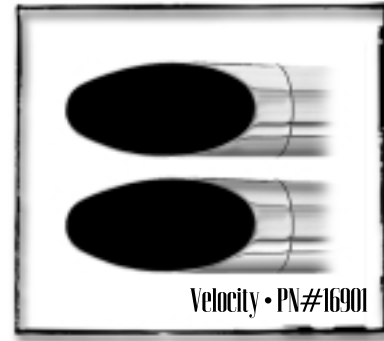


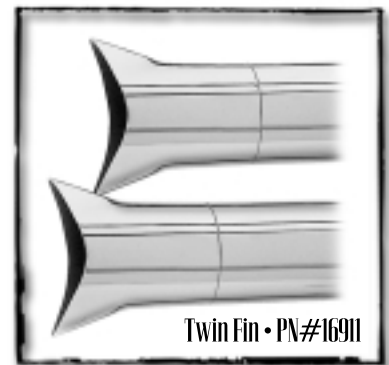
FIG. 3

VIEW FROM RIGHT HAND SIDE OF MOTORCYCLE

Customize Your Straightshots!



Optional Hot-Tips



Contact your local Vance & Hines dealer for more information!
www.vanceandhines.com