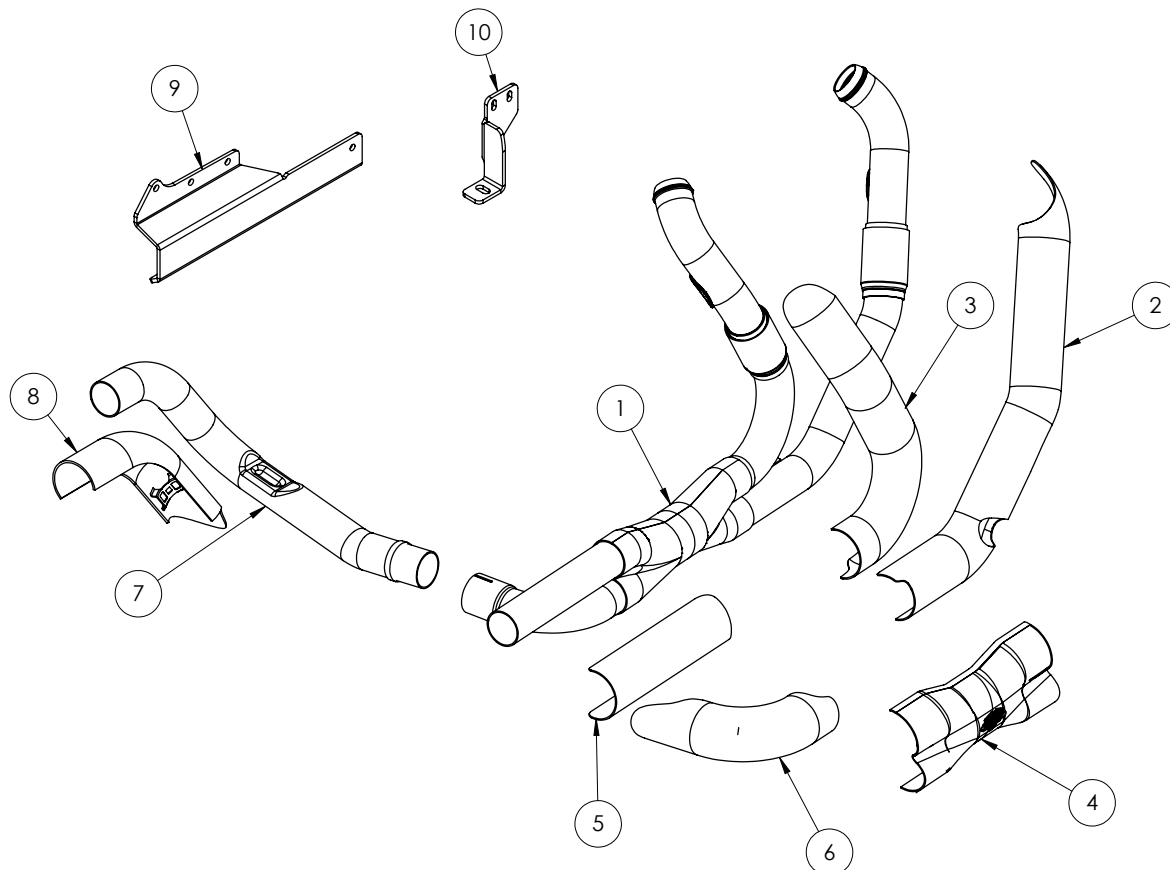


Congratulations, you have purchased the finest exhaust system available for your motorcycle. Your Vance & Hines exhaust is designed and crafted for performance, quality, and style. Please follow the instructions below, check exhaust system for missing or damaged parts and if you need any assistance please contact our technical support line (562) 921-7461.

**CARB EO K-006-3* covers the following combination of parts when used on
2014-2016 Harley-Davidson Touring Models (excluding Trikes)**

Kit	Catalytic Head Pipe	Slip-on Mufflers	Air Cleaners	ECU Programmer
#1	16894 (Power Duals Chrome)	16703 (Eliminator 400 Chrome)	71029 (VO2 Air Naked)	66015 (FPC Eliminator 400)
#2	16894 (Power Duals Chrome)	16553 (Destroyer OS450 Chrome)	71029 (VO2 Air Naked)	66021 (FPC OS450)
#3	16894 (Power Duals Chrome)	16455 (Hi-Output Chrome)	71029 (VO2 Air Naked)	66019 (FPC Hi-Output)
#4	16894 (Power Duals Chrome)	16773 (Monster Round Chrome)	71029 (VO2 Air Naked)	66017 (FPC Monster Round)
#5	16894 (Power Duals Chrome)	16763 (Twin Slash Round Chrome)	71029 (VO2 Air Naked)	66013 (FPC Twin Slash Round)
#6	46894 (Power Duals Black)	46703 (Eliminator 400 Black)	71029 (VO2 Air Naked)	66015 (FPC Eliminator 400)
#7	46894 (Power Duals Black)	46553 (Destroyer OS450 Black)	71029 (VO2 Air Naked)	66021 (FPC OS450)
#8	46894 (Power Duals Black)	46759 (Hi-Output Black)	71029 (VO2 Air Naked)	66019 (FPC Hi-Output)
#9	46894 (Power Duals Black)	46773 (Monster Round Black)	71029 (VO2 Air Naked)	66017 (FPC Monster Round)

* Please note that EO K-006-3 only covers the parts listed above when they are used in one of these nine enumerated kit combinations. These parts are not covered by this EO when used individually or in combination with other parts of the same type that are not listed above.

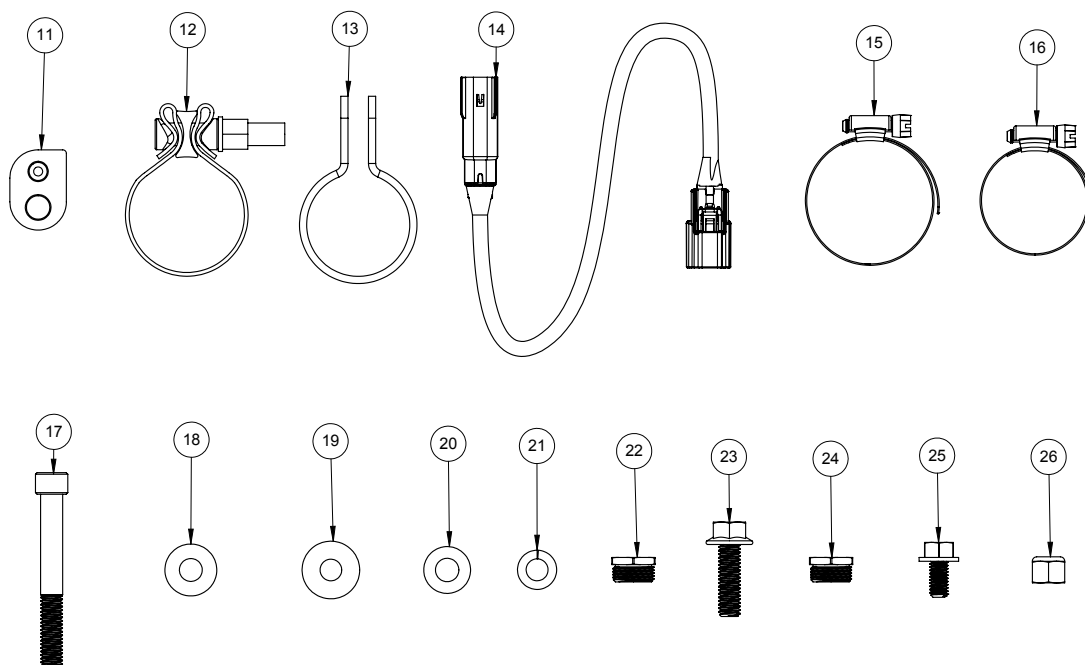


PARTS LIST

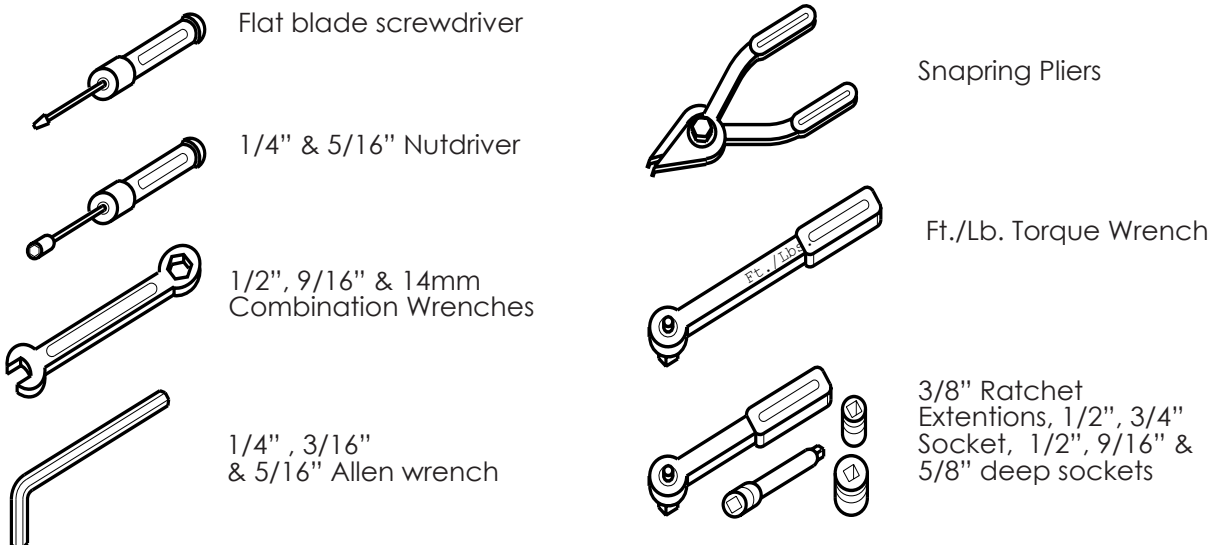
NO.	PART NO.	Description	Qty.
1	D828FC	Front Header Section	1
2	D858HP	Front Heat Shield	1
3	D859HP	Rear Heat Shield	1
4	D774HP-S	Collector Heat Shield	1
5	D773HP	Straight Pipe Heat Shield	1
6	D857HP	Crossover Heat Shield	1
7	D558FC	Rear Crossover Header	1
8	D567HP	Rear Crossover Heat Shield	1
9	819-P	Mount Bracket	1
10	564-P	Crossover Bracket	1
11	A672HW	Floor Board Spacer	1
12	A335HW	Torca Band Clamp	1
13	A223CC	Header Tube Clamp	1

14	A119EX	O2 Sensor Cable	1
15	A272HW	1.31-2.25" Hose Clamp	2
16	A270HW	.81-1.75" Hose Clamp	11
17	A102HW	3/8-16 x 3" SHCS	1
18	A471HW	Floor Board Spacer	1
19	A311HW	3/8 x 1 x 3/16" Washer	1
20	A106HW	3/8" SAE Flat Washer	2
21	A286HW	3/8" Split Lock Washer	1
22	A644ST	18-12mm O2 Adaptor	2
23	A302HW	3/8-16 x 1.25" Flange Bolt	1
24	A197HW	Dog Bone Nut Plate	1
25	A240HW	5/16-18 x 5/8" FHS	1
26	A265HW	3/8-16 Zinc Lock Nut	1

HARDWARE



TOOLS REQUIRED



STOCK EXHAUST SYSTEM REMOVAL

1. Remove both left and right saddlebags and set them aside. Remove the right side panel.
2. Loosen the pinch clamp bolt on the front end of muffler(s). **NOTE:** On OE two into one right side only exhaust systems, there is no left side removal of mufflers required.
3. Remove the two 5/16" bolts and washers that mount the muffler(s) to the saddlebag supports. Save these for re-use.
4. Remove the stock muffler(s) and set aside. **NOTE:** It may be necessary to use a penetrating lubricant to loosen muffler(s) from the head pipe.
5. Locate and unplug the O2 sensor wires from the wiring harness (Grey and Black connectors located behind right side panel) and remove cable ties holding wires to frame. Feed the end of the wires through the frame so they are free from the motorcycle. **NOTE:** Pay attention to wire routing for re-installation.
6. Remove the right hand floor board.
7. Remove the right hand passenger floor board.
8. Loosen head pipe clamp connecting the left side muffler to the header and the mount bracket on the backside of the oil pan. Remove the crossover section of the head pipe and the head pipe clamp(OE dual muffler systems only).
9. Remove the mount clamp located behind the oil pan, set the 1/4"-20 x 3/4" screws aside for reuse.
10. Loosen the nut and carriage bolt holding the front head pipe assembly to the bracket on the transmission housing.
11. Loosen the heat shield clamps on both front and rear exhaust pipes.
12. Remove the two flange mounting nuts from each head pipe, located at the cylinder head. Carefully remove the head pipes and set aside.
13. Using a 14mm wrench, carefully remove the O2 sensors from the stock head pipes and save for re-use with the new system.
14. Carefully remove the exhaust port flanges and circlips from the stock exhaust system using snapping pliers. **NOTE:** If circlips look bent or twisted, replace them.

VANCE & HINES EXHAUST INSTALLATION

1. Check the exhaust gaskets for damage, and replace if necessary, part # 65324 - 83B.
2. Install the crosspipe support bracket (stamped 564-P) at the stock mount clamp location behind the oil pan with the stock 1/4"-20 x 3/4" screws. **NOTE:** Do not fully tighten at this time.
3. Replace the bracket on the transmission housing with new bracket (stamped 819-P) (supplied) tighten enough to hold bracket in place but allow for adjustment later (Figure 1).
4. Remove header assembly and heat shields from protective packaging. Place each heat shield on a non-abrasive surface such as blanket or carpet. Using a felt tip pen, mark outside edge of each heat shield to show location of mounting clips that hose clamps will loop through (Figure 4).
5. The header assembly (D828FC) will require heat shields stamped D858HP, D859HP, D857HP, D773HP, D774HP-S. The remaining heat shield D567HP will be used on the crosspipe header (D558FC).
6. Lay header assembly into heat shields and loosely install the #20 hose clamps (supplied) into mounting clips. Screw heads should be accessible when the system is installed on motorcycle for adjustment purposes (Figure 4). Do not tighten at this time. **NOTE:** The D773HP heat shield should be installed with the scalloped end towards the collector.
7. Use the #28 hose clamps and install the collector heat shield (D774HP-S) over the other heat shields, it can be installed after header is installed if desired.
8. Apply a small amount of anti-sieze compound to the threads of the oxygen sensors and install them into the new head pipe. Install supplied 18mm to 12mm oxygen sensor adapter then install the 12mm oxygen sensors (Grey connector into the front head pipe, Black connector into the rear head pipe.) **NOTE:** Models using 18mm wideband oxygen sensors install the sensor directly into the head pipe.
9. Install circlips and flanges from stock system onto the new header pipes.
10. Using stock flange nuts, carefully install the header assembly onto the motorcycle. Finger tight only at this time.
11. Use the nut plate and 5/16" x 5/8" flange bolt (supplied) to attach the header to the bracket. Make adjustments to the bracket as necessary to ensure proper alignment.
12. Use 1/4" Allen wrench to tighten one or both transmission bolts to hold bracket alignment. Remove header and fully tighten transmission bolts to 13 - 16 ft/lb.
13. Again, using stock flange nuts, carefully re-install the header assembly onto motorcycle. Do not tighten at this time.
14. Use the nut plate and 5/16" x 5/8" flange bolt (supplied) to attach the header to the bracket.
15. Tighten the exhaust port flange nuts.
16. Tighten the 5/16" x 5/8" flange bolt that attaches the header to the bracket.
17. Install the Torca Band Clamp (supplied), with nut facing down on the expanded end of the front head pipe.
18. Referring to Figure 2 - Fasten the crossover pipe to the crossover bracket using supplied hardware. First place the crossover bracket between the arms of the header clamp. Next insert the 3/8"-16 x 1.25 flange head bolt through the header clamp, crossover bracket, heavy 3/8" washer and once again the arm of the header clamp. Lastly install a 3/8" thin flat washer and 3/8"-16 lock nut. **NOTE:** Do not tighten at this time.
19. Loosely attach heat shield D567HP to crossover header (D558FC) and slip it into the end of the front head pipe.

VANCE & HINES EXHAUST INSTALLATION CONTINUED

20. Tighten the stock 1/4"-20 screws securing the bracket to the oil pan, rotate crossover head pipe (D558FC) to proper position for muffler being used and tighten flange head bolt and locknut securing the crosspipe clamp (A223CC) to the rear transmission bracket.
21. Install the mufflers of your choice onto both head pipes and secure to saddlebag supports with the stock 5/16" bolts and lock washers. On bike equipped with OE 2 into 1 systems, Vance and Hines Left Side Mount kit #16933 may be required to complete installation.
22. Check alignment of mufflers and make corrections as required.
23. Tighten the band clamps securing the crosspipe and the mufflers to the head pipes.
24. Be sure to check that all fasteners including the hose clamps on the heat shields are tight.
25. Route the front (Grey) O2 sensor wire along OE path and plug into supplied extension harness (A119EX). Plug extension harness into the Grey connector. Route the rear (Black) O2 sensor along the top of the transmission, along the OE path, and plug into the Black connector. Secure wires to the frame using supplied nylon cable ties.
26. Install Spacer (A672HW), on floor board support plate (Figure 3). Remove the left 3/8" socket cap screw only and place the spacer onto floor board support plate aligning the holes in the spacer with those on the support plate. Re-install the 3/8" socket cap screw into the original hole capturing spacer. **NOTE:** You may use the 3/8" stock socket cap screw to temporarily hold spacer alignment while tightening the 3/8" socket cap screw.
27. Install a 3/8" lock washer (supplied) on the 3/8"-16 x 3" socket cap screw (supplied). Using this bolt re-install the floor board with one 1" spacing washer (supplied) on the forward (right) mount. **NOTE:** Spacing washer are located between the floor board supports and floor board mount plate.
28. Re-install the right side passenger floorboard, saddlebags and right side panel.
29. Be sure to tighten all hardware before starting your motorcycle. Periodically check that all hardware is still tight.
30. After installation and before starting the motorcycle, completely clean pipes and mufflers with cleaning solvent and a clean soft cloth that will not leave residue. **NOTE:** Any residue, oil, or fingerprints will stain the chrome when the metal heats up.

EXHAUST CARE (BLACK)

1. When installing a new set of black pipes, make sure your hands are clean and free of oil. After installation, thoroughly clean pipes with warm soapy water and a soft cloth. Dry with a clean towel to remove any residue before starting the motorcycle. Do NOT use anything abrasive to clean the pipes.
2. Avoid long periods of idling as this can cause discoloration.
3. Intake leaks can cause the engine to run lean and overheat, this could lead to discoloration.
4. Make sure there are no exhaust leaks at the junction of the exhaust pipes and cylinder head. We recommend replacing gaskets if they are worn.

FIGURE 1

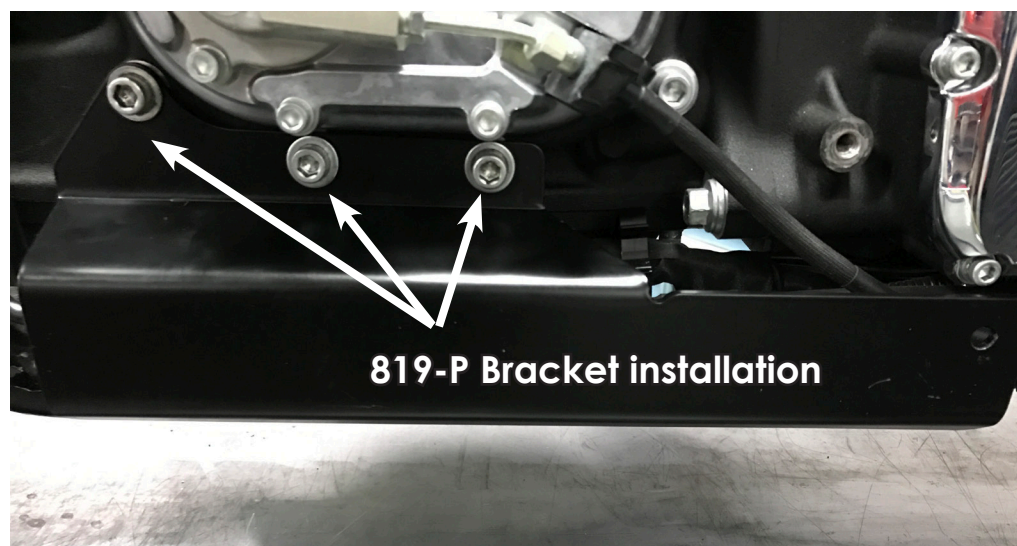


FIGURE 2

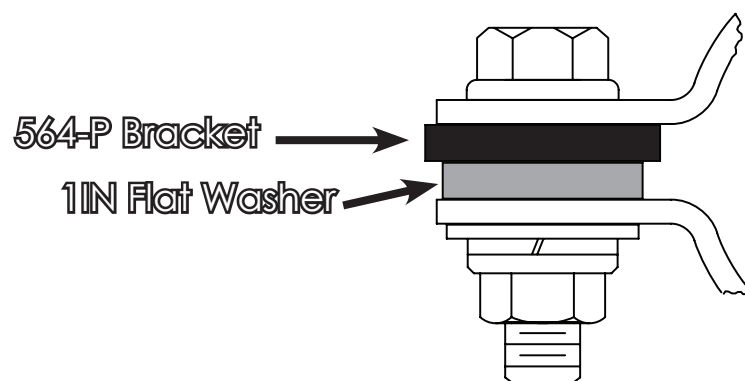


FIGURE 3

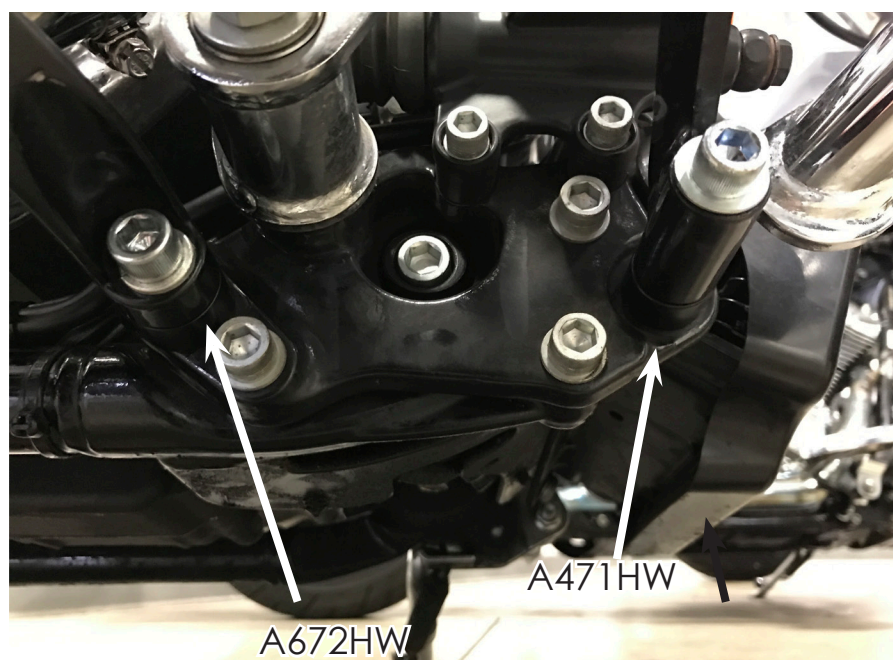
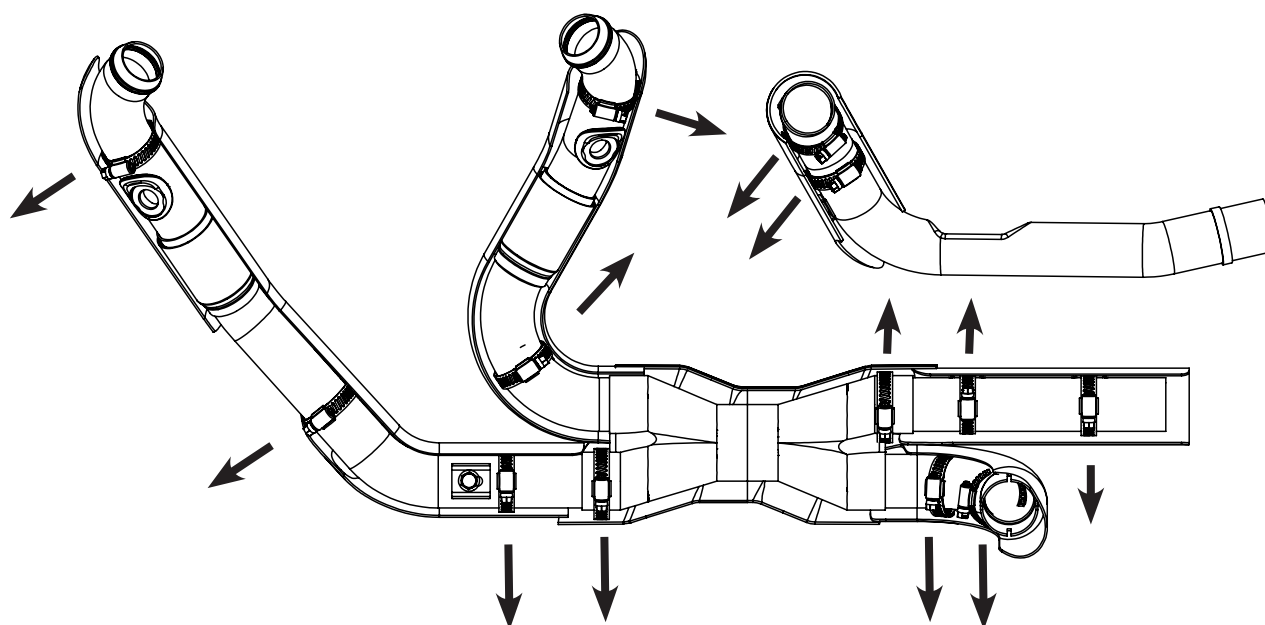


FIGURE 4



EMISSIONS WARRANTY STATEMENT

Vance & Hines warrants each Power Duals CTR is designed and manufactured to conform at the time of initial retail purchase with the applicable California Air Resources Board (ARB) regulations for Aftermarket Critical Emission Control Parts on Highway Motorcycles and is free from defects in materials and workmanship which would cause a motorcycle to fail to conform to those regulations for the following warranty periods (as applicable):

(1) If the kit is installed on a highway motorcycle within four years of the date that the highway motorcycle is first acquired by an ultimate purchaser, the warranty shall period shall be 5 years or 30,000 km (18,641 miles), whichever first occurs, from the date of initial retail sale, or

(2) If the kit is installed on a highway motorcycle more than four years of the date that the highway motorcycle is first acquired by an ultimate purchaser, the warranty period will be three years or 15,000 km (9,320 miles), whichever first occurs, from the date of initial retail sale.

COVERAGE. The above described warranty periods apply only to emissions-related defects, such as the integrity of the catalytic converter. This warranty does not apply to cosmetic defects and does not apply to any defects resulting from situations described below under "LIMITATIONS." Power Duals CTR with warranted defects shall be repaired or replaced by Vance & Hines, or by a dealer designated by Vance & Hines, at no cost to the owner. Vance & Hines will also be liable for damages to other motorcycle components proximately caused by a failure under warranty of the Power Duals CTR.

OWNER'S OBLIGATIONS. The following obligations must be fulfilled by the Power Duals CTR owner to maintain the validity of the emission defects warranty:

a. Owner is responsible for the performance of all emissions-related maintenance prescribed by the vehicle manufacturer. Vance & Hines recommends that you retain all receipts covering maintenance on your motorcycle related to any alleged defect, but Vance & Hines cannot deny warranty solely for the lack of receipts or for your failure to ensure the performance of all scheduled maintenance.

b. Owner is responsible notifying Vance & Hines as soon as a problem exists. Owner may be required to have the motorcycle inspected by a dealer designated by Vance & Hines at the dealer's place of business during customary business hours. Power Duals CTRs with warranted defects will be repaired or replaced in a reasonable amount of time, not to exceed 30 days.

c. Owner must present a copy of the proof of initial retail purchase date of both the Power Duals CTR and motorcycle, issued at the time of purchase to Vance & Hines at the time warranty repairs or replacements are performed.

LIMITATIONS. This emission defects warranty shall not cover repair or replacement of the Power Duals CTR required as a result of accident, misuse or neglect, repairs improperly performed, use of replacement parts or accessories not conforming to the motorcycle manufacturer's specifications which adversely affect performance and/or durability, alterations or modifications not recommended by the motorcycle manufacturer or Vance & Hines, and/or any motorcycle on which odometer mileage has been changed so that the actual mileage cannot be determined.

LIMITED LIABILITY. The liability of Vance & Hines under this emission defects warranty is limited solely to the remedying of defects in materials or workmanship of the Power Duals CTR by Vance & Hines or a third party approved by Vance & Hines at that party's place of business during customary business hours. This warranty does not cover inconvenience or loss of use of the motorcycle, or transportation the Power Duals CTR or the motorcycle on which the system is installed to Vance & Hines or a third party approved by Vance & Hines.

If you have any questions regarding your warranty rights and responsibilities, you should contact Vance & Hines at info@vanceandhines.com or (562) 921-7461.

NOTICE TO INSTALLER

The California Evaluation Procedures for Aftermarket Critical Emission Control Parts on Highway Motorcycles require that installers of aftermarket critical emissions control parts, such as the Vance & Hines Power Duals CTR warrant that such parts are installed correctly in accordance with the instructions set forth in this document, and that the installation will not cause the failure of the part to conform to the applicable requirements of the procedures or cause damage to any original part on the highway motorcycle due to incorrect installation. The installation warranty shall be 2 years or 12,000 kilometers (7,456 miles) from the date of the installation of the aftermarket critical emissions control part, whichever occurs first.

Installers and retailers of aftermarket critical emissions control parts, such as Vance & Hines Power Duals CTR, keep documentation regarding the sale and/or installation of such parts, including part number/model, date of sale and/or installation, purchaser name and address, vehicle make, model and vehicle identification number. All such documentation must be maintained for a period of 5 years from the date of sale or installation and be made available upon request by California Air Resources Board staff.

INSTALLER WARRANTY

Installer warrants that this Vance & Hines Power Duals CTR has been installed correctly, in accordance with the manufacturer's specified instructions, and that the installation will not cause failure of the Power Duals CTR to conform to the applicable requirements of the California Evaluation Procedures for Aftermarket Critical Emission Control Parts on Highway Motorcycles or cause damage to any original part on the highway motorcycle due to incorrect installation. This installation warranty shall be for two years or 12,000 kilometers (7,456 miles) from the date of the installation of the Power Duals CTR, whichever occurs first.

COVERAGE. The above described installer's warranty periods apply only to installation-related defects, and not to the function or integrity of the catalytic converter, which is warranted by Vance & Hines. This installer's warranty does not apply to cosmetic defects and does not apply to any defects resulting from situations described below under "LIMITATIONS." Power Duals CTR with warranted defects shall be repaired or replaced by Vance & Hines, or by a dealer designated by Vance & Hines, at no cost to the owner. Vance & Hines will also be liable for damages to other motorcycle components proximately caused by a failure under warranty of the Power Duals CTR.

LIMITATIONS. Installer's warranty shall not cover repair or replacement of the Power Duals CTR required as a result of accident, misuse or neglect, repairs improperly performed by someone other than installer, use of replacement parts or accessories not conforming to the motorcycle manufacturer's specifications which adversely affect performance and/or durability, alterations or modifications not recommended by the motorcycle manufacturer or Vance & Hines, and/or any motorcycle on which odometer mileage has been changed so that the actual mileage cannot be determined.

13861 ROSECRANS AVENUE / SANTA FE SPRINGS, CA 90670

SALES: (562) 921-5388

TECHNICAL: (562) 926-5291

FAX: (562) 802-0110

vanceandhines
.com