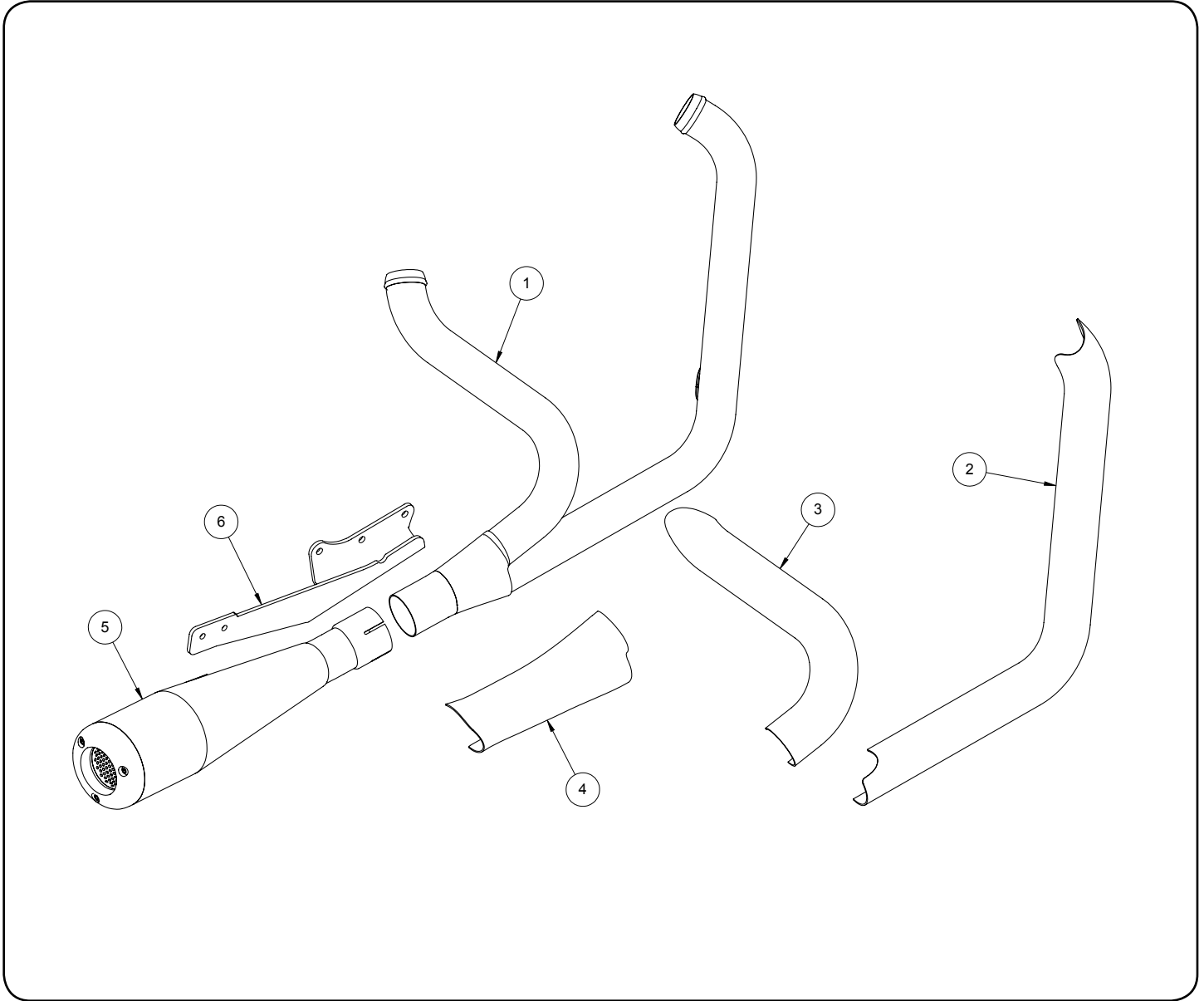


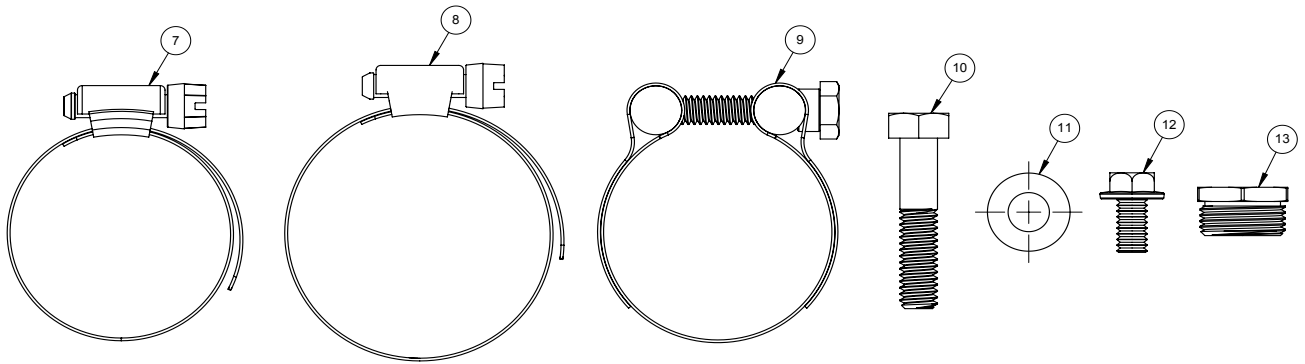
Congratulations, you have purchased the finest exhaust system available for your motorcycle. Your Vance & Hines exhaust is designed and crafted for performance, quality, and style. Please follow the instructions below, check exhaust system for missing or damaged parts and if you need any assistance please contact our technical support line (562) 921-7461.



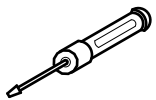
PARTS LIST

NO.	Part No.	Description	Qty.				
1	D468FC	Header Assembly	1	7	A270HW	.81-1.75 IN. SS Hose Clamp	6
2	D468HC/D418HP	Front Heat Shield	1	8	A272HW	1.3125-2.25 IN. SS Hose Clamp	1
3	D469HC/D419HP	Rear Heat Shield	1	9	A354HW	2.19-2.37 IN. Band Clamp	1
4	A270HC/A275HP	Collector Heat Shield	1	10	A345HW	5/16-18 x 1 1/2 IN. CS	3
5	D629RC/D649RP	Muffler Assembly	1	11	A107HW	5/16 IN. Flat Washer	3
6	986-P	Muffler Support Bracket	1	12	A139HW	1/4-20 x 1/2 IN. FHS	2
				13	A644ST	18-12mm Adaptor	2

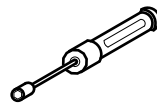
HARDWARE



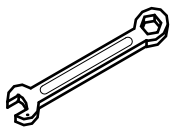
TOOLS REQUIRED



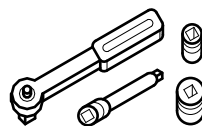
Flat blade Screwdriver



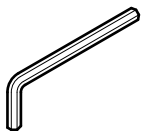
1/4" 5/16" Nut Driver



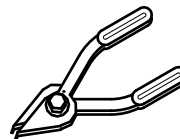
Combination Wrench:
1/2", 3/8", 7/8" or 22mm
& 14mm



3/8" Ratchet, extensions
1/2" & 19mm Sockets
9/16" Deep Socket



Allen Wrenches: 3/16",
1/4"



Snapping Pliers

STOCK EXHAUST SYSTEM REMOVAL

1. Remove seat to gain access to rear oxygen sensor connector. Unplug sensor and feed end of wire through frame to free it from motorcycle. **NOTE:** Pay attention to wire routing for re-installation.
2. For **2006 to 2011** models remove two bolts holding rectifier onto front of frame (near front tire). Open plastic cover to gain access to front oxygen sensor connector. Unplug sensor from harness and feed end of wire through to free it from motorcycle. For **2012 to later** models the connector is located under the rectifier at the front of the motorcycle.
3. Loosen the heat shield clamps on both the front and the rear head pipes.
4. Remove two cylinder exhaust port flange nuts from each head pipe, located at the cylinder head.
5. If equipped, remove the front head pipe clamp carriage bolt.
6. Remove the bolt that attaches the mufflers to the frame mounting bar.
7. Remove the complete exhaust system and set aside (Assistance may be required).
8. Remove the stock mounting bar and the studs in the transmission cover.
9. Position the muffler support bracket over mounting location to determine which bolts to remove (**Figure 1**). Install removed bolt in the top hole left vacant by the new bracket.
10. Carefully remove the flanges and circlips from the stock exhaust system using snapping pliers. **NOTE:** Replace bent or damaged circlips. (Recommended replacement exhaust port gaskets, HD #65324-83B).
11. Carefully remove stock oxygen sensors. They will be re-used on the new system.

VANCE & HINES EXHAUST INSTALLATION

1. Attach the muffler support bracket to transmission and tighten to 12-15ft/lb torque using three 5/16" x 1 1/2" hex head bolts (supplied) (**Figure 1**).
2. Remove head pipes and heat shields from protective packaging. Place each heat shield on a non-abrasive surface such as a blanket or carpet large enough to fully protect the heat shields. For chrome use a felt tip pen and mark the outside edge of each heat shield to show the location of the hose clamp mounting clips. (**Figure 2**). For black systems use a pencil or tape to mark the outside of the heat shields.
3. Lay head pipes into their respective heat shields. Use care when installing the hose clamps to avoid damaging the coating; install by carefully feeding through the tail end of clamps. Take note of clamp screw head direction (**Figure 2**). Screw head must be accessible when system is installed on motorcycle for adjustment purposes. **NOTE:** To avoid excessive movement heat shield during installation, only finger tighten at this time.
4. Apply a small amount of anti-seize compound to the threads of the oxygen sensors and install them into the new head pipe. **NOTE: 2006 to 2011** models or models using 18mm wideband oxygen sensors install sensor directly into head pipe. **2012 to later** models install supplied 18mm to 12mm oxygen sensor adapter then install 12mm oxygen sensors (Grey connector into front head pipe, Black connector into rear head pipe.) All models not using oxygen sensors install 18mm plug with copper crush washer (V&H P/N 16925).
5. Install exhaust port flanges and circlips (from stock system) onto head pipes. **NOTE:** Use care when installing flanges, using a low tack tape (blue painters or equivalent) if necessary to protect the edges of the heat shields from damage.

VANCE & HINES EXHAUST INSTALLATION CONTINUED

6. Using stock flange nuts, carefully install head pipes into exhaust ports, starting with the rear cylinder. Assistance may be required. **NOTE:** Do not tighten at this time.
7. Install band clamp with bolt facing down (supplied) onto end of muffler body.
8. Install muffler assembly onto collector of header assembly. Attach muffler assembly to installed bracket and secure with 1/4" flange head bolts (supplied).
9. Install collector heat shield onto header assembly sliding it on from the rear and engaging alignment clips with the rear edge of the front & rear heat shields. Attach collector heat shield with one #28 hose clamp. **NOTE:** Finger tighten at this time.
10. Tighten exhaust port flange nuts, nut plate bolts, band clamp, and 5/16" flange head bolts at the bracket.
11. Tighten hose clamps securing header heat shields and collector heat shield making sure that they are flush.
12. Feed wire for front oxygen sensor through frame and into plastic holder on frame. Plug sensor into stock wiring connector. Snap plastic holder closed to hold connector in place.
13. **2006 to 2011** models put the toothed edge of the wiring holder into the slot in frame. Re-install rectifier so that it fits under tooth of wiring holder, keeping it in place in the frame. Tighten both the bolts.
14. Install a new cable tie (supplied) to hold wires onto frame in original location.
15. Feed connector for rear oxygen sensor through frame and into under seat compartment. Plug sensor into stock wiring connector
16. Reinstall the seat.
17. Check for adequate clearance between all exhaust system components and motorcycle accessories prone to heat damage.
18. Be sure to tighten all hardware before starting your motorcycle.

EXHAUST CARE

1. When installing a new set of chrome pipes, make sure your hands are clean and free of oil. After installation, thoroughly clean pipes with a soft cloth and cleaning solvent that will leave no residue (chrome wax/polish, glass cleasner, alcohol, ammonia, etc...) before starting the motorcycle.
2. Avoid long periods of idling as this can cause discoloration.
3. Intake leaks can cause the engine to run lean and overheat, this could lead to discoloration.
4. Make sure there are no exhaust leaks at the junction of the exhaust pipes and cylinder head. We recommend replacing gaskets if they are worn.

EXHAUST CARE (BLACK)

1. When installing a new set of black pipes, make sure your hands are clean and free of oil. After installation, thoroughly clean pipes with warm soapy water and a soft cloth. Dry with a clean towel to remove any residue before starting the motorcycle. Do NOT use anything abrasive to clean the pipes.
2. Avoid long periods of idling as this can cause discoloration.
3. Intake leaks can cause the engine to run lean and overheat, this could lead to discoloration.
4. Make sure there are no exhaust leaks at the junction of the exhaust pipes and the cylinder head. We recommend replacing gaskets if they are worn.

FIGURE 1

Use 5/16-18 X 2 Hex bolt and washer. Install spacer between bracket and motor.

Install the allen bolt removed from the lower hole.

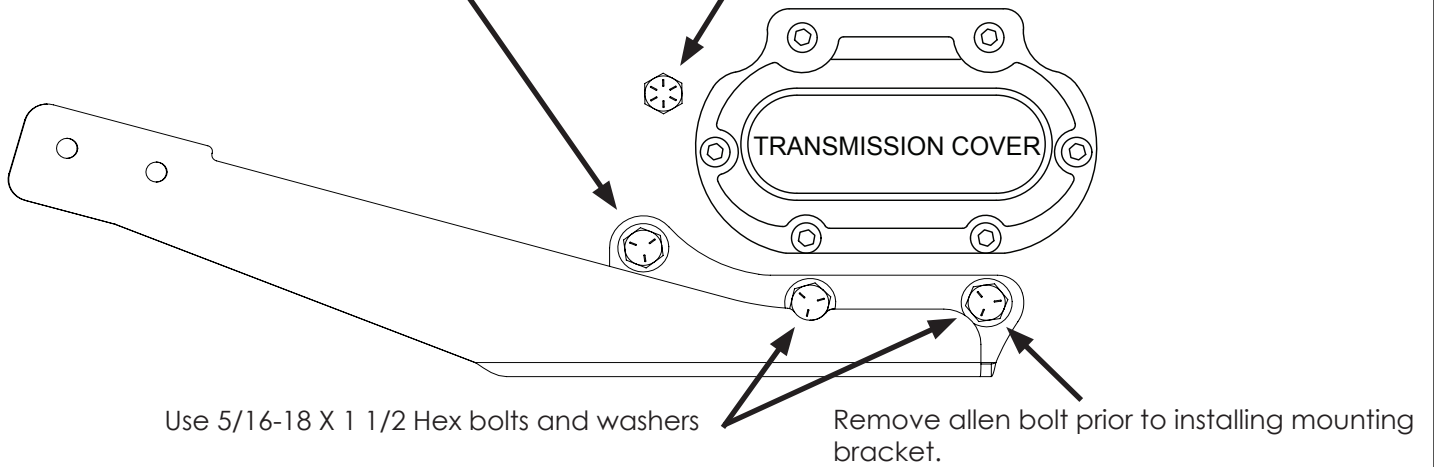
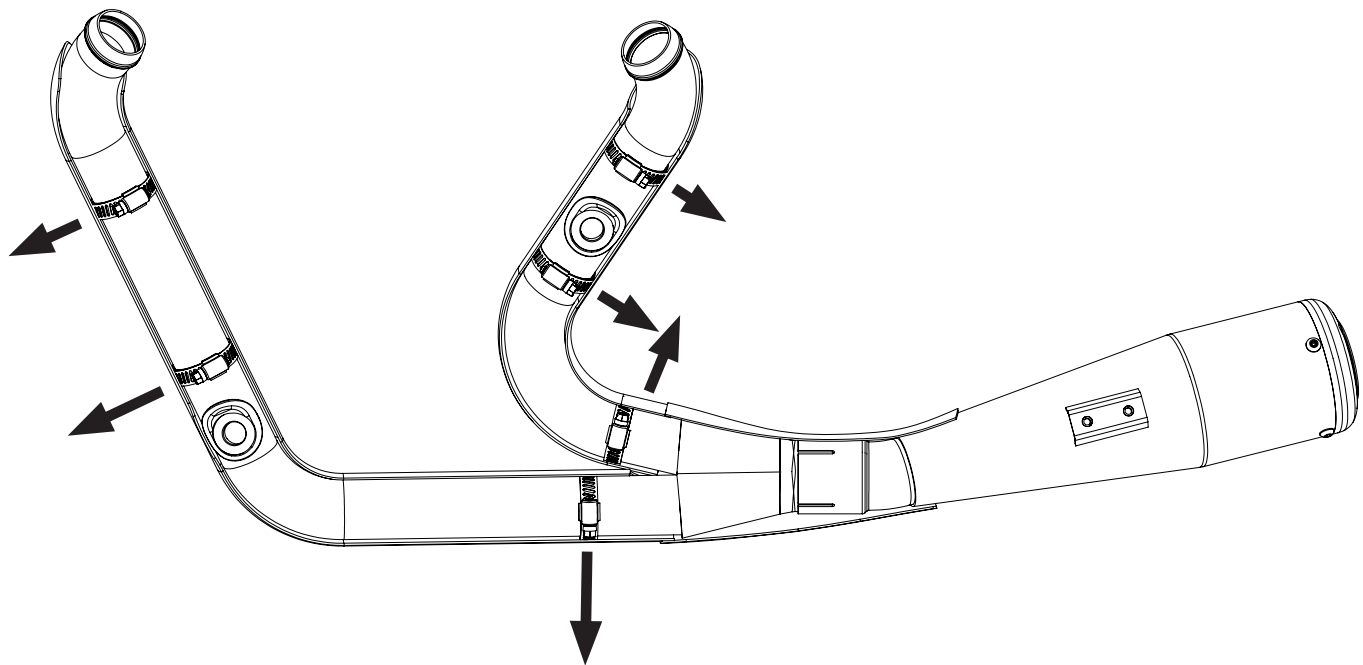


FIGURE 2



Emissions Notice:

In California, in order to meet Air Resources Board emissions requirements, certain aftermarket part applications have been identified as replacements, and others have received ARB Executive Orders. All other emissions related aftermarket parts are for competition use only. A list of replacement parts and EO parts, and corresponding fitment is provided at vanceandhines.com/california.

Warranty:

All Vance & Hines products are warranted against defects in material and workmanship for a period of 90 days. This warranty does not cover discoloration or rust. This warranty shall be limited to the repair or replacement of the product, which may be proven defective under normal use. Vance & Hines will not warranty any system that has been abused, misused, improperly installed or modified.

Dealers or distributors are not authorized to make dispositions binding upon Vance & Hines. Vance & Hines will not be responsible for any labor charges incurred in removing or replacing any system under warranty. A return authorization number and a copy of the original purchase invoice must accompany all returns. Parts returned without a return authorization may be refused.

THE NEXT GENERATION OF FUEL MANAGEMENT IS HERE

The Fuelpak FP3 will revolutionize fuel management for all new Harley-Davidson models now using the HDLAN (CAN Bus) system. Connecting wirelessly by Bluetooth to iPhone or Android Smartphones, Fuelpak FP3 uses Flash technology to recalibrate engine parameters and mapping for Vance & Hines exhaust systems downloaded from the expansive library of calibrations developed by Vance & Hines.

- Smartphone App User Interface (iOS and Android)
- Recalibrates ECM by Flash Tuning
- Autotune Feature for Added Tuning Precision
- Displays Live Sensor Data
- App Links Direct to Customer Service Site

FITMENT NOTES:

- FUELPK FP3 IS COMPATIBLE WITH CAN BUS MODELS ONLY (TOURING, SOFTAIL, DYNA & SPORTSTER)
- FUELPK FP3 IS NOT COMPATIBLE WITH V-ROD MODELS.
- MAPS ARE CURRENTLY AVAILABLE FOR: SPORTSTER, DYNA, SOFTAIL, TOURING AND TRIKE MODELS.
- MAPS FOR 110CI CVO MODELS COMING SOON.

EMISSIONS NOTICE:

FUELPK IS INTENDED FOR RACING USE ONLY, AND IS NOT LEGAL FOR SALE OR USE IN CALIFORNIA ON POLLUTION-CONTROLLED VEHICLES.



13861 ROSECRANS AVENUE / SANTA FE SPRINGS, CA 90670
SALES: (562) 921-5388
TECHNICAL: (562) 926-5291
FAX: (562) 802-0110

vanceandhines
.com