

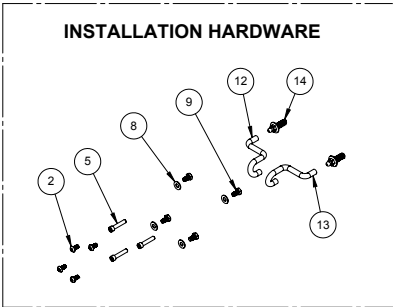
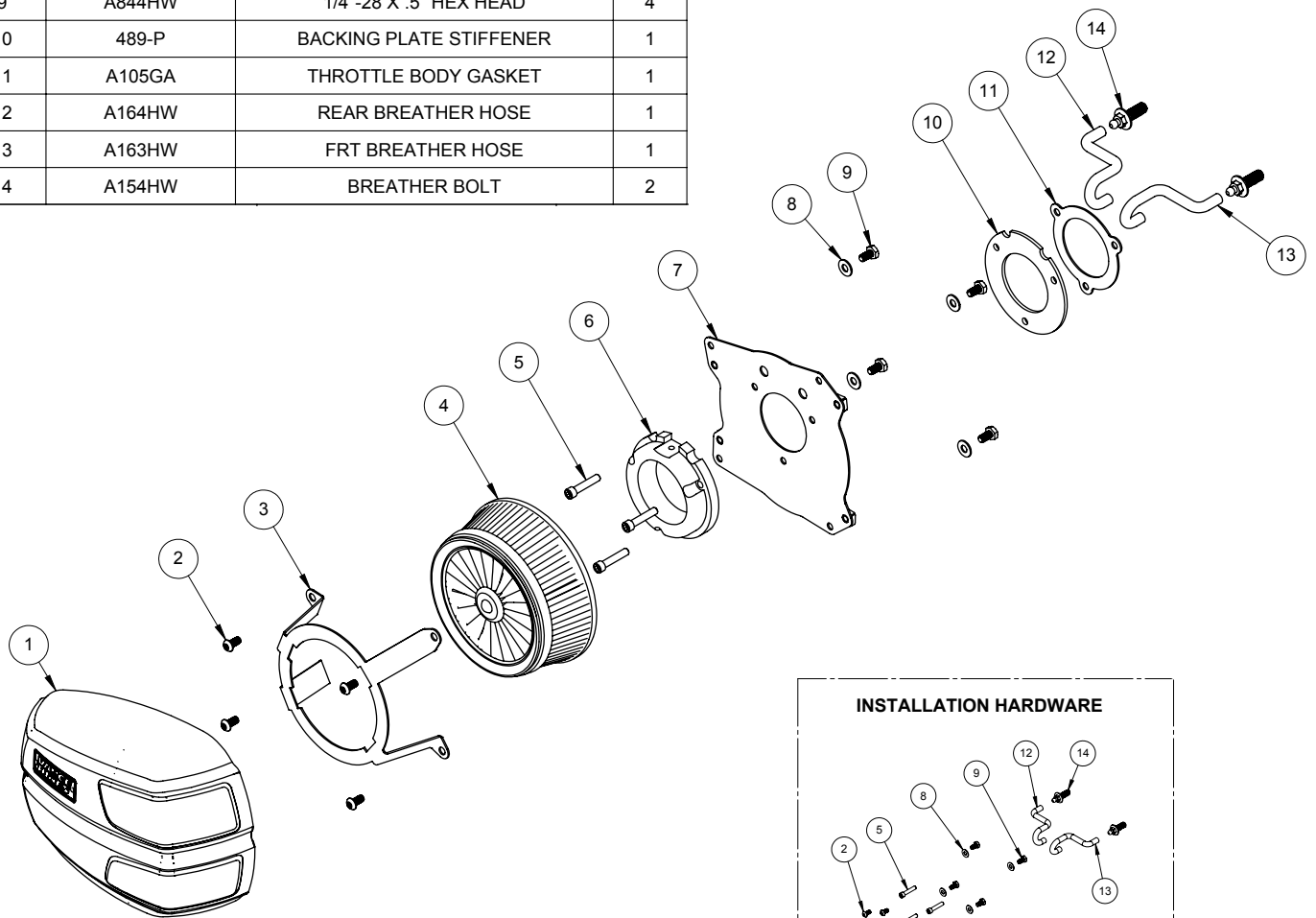


# INSTALLATION INSTRUCTIONS: HARLEY-DAVIDSON TOURING DRAK CARBON AIR INTAKE PART# 70053

Congratulations, you have purchased the finest air intake available for your motorcycle. Your Vance & Hines air intake is designed and crafted for performance, quality and style. Please follow the instructions below, check exhaust system for missing or damaged parts and if you need any assistance please contact our technical support line (562) 921-7461.

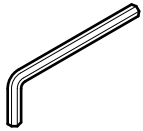
## PARTS LIST

ITEM NO.	PART NO.	DESCRIPTION	QTY.
1	D255CV	CARBON COVER ASSEMBLY	1
2	A235HW	1/4-20 x 1/2 BHCS	4
3	941	AIR FILTER CAGE	1
4	D130FL	AIR FILTER	1
5	A137HW	1/4-20 X 1.25 SHCS	3
6	D105VT	ALUMINUM VENTURI	1
7	470-P	BACKING PLATE ASSEMBLY	1
8	A112HW	#10 FLAT WASHER	4
9	A844HW	1/4"-28 X .5" HEX HEAD	4
10	489-P	BACKING PLATE STIFFENER	1
11	A105GA	THROTTLE BODY GASKET	1
12	A164HW	REAR BREATHER HOSE	1
13	A163HW	FRT BREATHER HOSE	1
14	A154HW	BREATHER BOLT	2

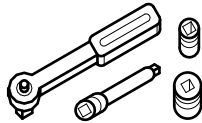


**PAGE LEFT BLANK INTENTIONALLY**

## TOOLS REQUIRED



3/16 Allen Wrench  
1/4 Allen Wrench  
5/16 Allen Wrench  
T27 Torx Wrench



3/8 Drive Ratchet  
7/16 Hex Socket  
7/16 Combo Wrench

Inch-Pound Torque Wrench  
Loctite 243

## OEM SYSTEM REMOVAL

1. Take off the air filter cover by removing the 5/16" x 1/2" button head cap screw in the center.
2. This will expose the filter element, which is then removed by taking out the three Torx head cap screws.
3. Remove the breather hoses from the cylinder head breather bolts by gently pulling on them.
4. Now remove the backing plate and gasket by unbolting the cylinder head breather bolts. Be sure that the surface is clean and dry.

## V&H AIR INTAKE INSTALLATION

1. For a clear understanding of this installation, it is best to refer to the exploded view diagram while reading these instructions.
2. When installing or servicing the air cleaner, apply Loctite 243 (blue) to the threads of all the fasteners.
3. Install the two cylinder head breather bolts **(14)**. NOTE: Tighten the cylinder head breather bolts **(14)** to 120-144 in-lbs (13.6-16.3 Nm).
4. Install the rear and front breather hoses **(12)** & **(13)** through the top two holes in the filter backing plate **(7)**, aligned as shown.
5. Using the three 1/4"-20 x 1.25" socket head cap screws **(5)** the venturi **(6)**, the filter backing plate w/ breather hoses **(7)**, backing plate spacer **(10)**, and gasket **(11)**, install onto the throttle body. Make sure the inside edges of all of these parts are aligned before tightening to 55-60 in- lbs (6.2-6.8 Nm).
6. Install the cover mounting bracket **(3)** onto the air filter **(4)** with the 1/4-20 button head cap screws **(2)**. NOTE: Tighten button head cap screws **(2)** to 55 - 60 in-lbs (6.2 - 6.8 Nm).
7. Install the carbon cover **(1)** onto the backing plate using the 1/4-28 Hex cap screws **(9)** with washers **(8)**. NOTE: Tighten the Hex cap screws **(9)** to 75.6 - 120 in - lbs (8.5 - 13.6 Nm).
8. After 100 miles check to be sure that all bolts are still tight. Periodically ensure that these screws remain tight.

**Emissions Notice:**

In California, in order to meet Air Resources Board emissions requirements, certain aftermarket part applications have been identified as replacements, and others have received ARB Executive Orders. All other emissions related aftermarket parts are for competition use only. A list of replacement parts and EO parts, and corresponding fitment is provided at [vanceandhines.com/california](http://vanceandhines.com/california).

**Warranty:**

All Vance & Hines products are warranted against defects in material and workmanship for a period of 90 days. This warranty does not cover discoloration or rust. This warranty shall be limited to the repair or replacement of the product, which may be proven defective under normal use. Vance & Hines will not warranty any system that has been abused, misused, improperly installed or modified.

Dealers or distributors are not authorized to make dispositions binding upon Vance & Hines. Vance & Hines will not be responsible for any labor charges incurred in removing or replacing any system under warranty. A return authorization number and a copy of the original purchase invoice must accompany all returns. Parts returned without a return authorization may be refused.

13861 ROSECRANS AVENUE / SANTA FE SPRINGS, CA 90670

SALES: (562) 921-5388  
TECHNICAL: (562) 926-5291  
FAX: (562) 802-0110

**vanceandhines**  
**.com**