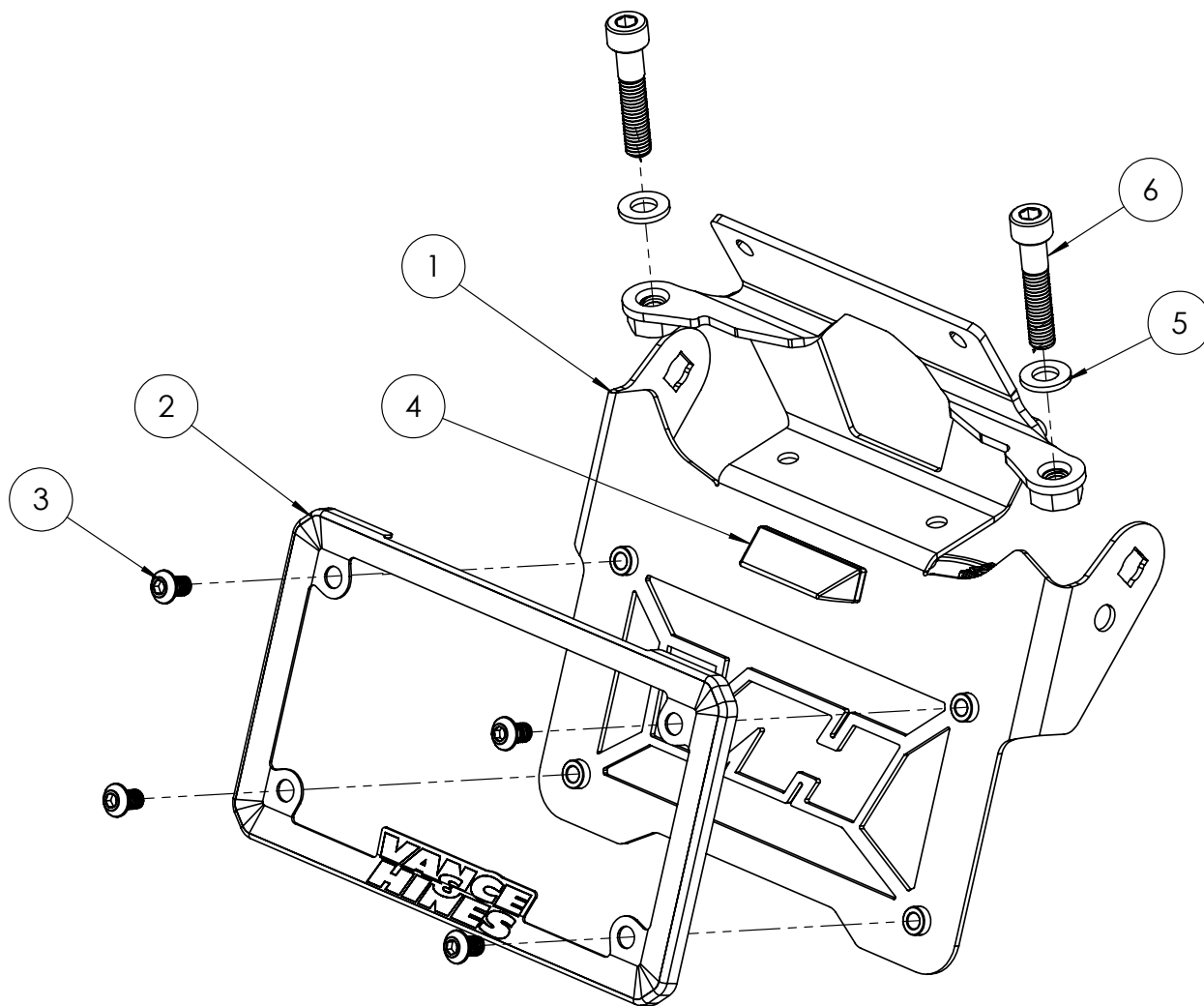


INSTALLATION INSTRUCTIONS: 2017 HARLEY-DAVIDSON STREET ROD FENDER ELIMINATOR PART# 16041

Please follow the instructions below, check the kit system for missing or damaged parts and if you need any assistance please contact our technical support line (562) 921-7461.



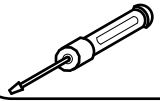
PARTS LIST

ITEM NO.	PART NO.	DESCRIPTION	QTY.
1	D425FE-P	STREET ROD FENDER ELIMINATOR	1
2	A420FE-P	LICENSE PLATE FRAME BLACK	1
3	A544HW	M6 X 1 X10 SCREW	4
4	D125EX	LED LIGHT ASSEMBLY	1
5	A616HW	M8 FLAT WASHER	12
6	A452HW	M8 X 40MM SHCS	2
7	A288HW	ZIP TIE	4

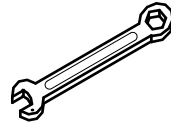
TOOLS REQUIRED



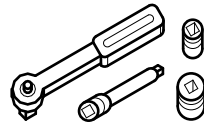
Allen Keys: 6mm



Screwdriver & Diagonal Cutter



Combination Wrench: 1/2"



RATCHET: 1/4" DRIVE
SOCKET: 1/2", 10mm, 8mm

STOCK LICENSE PLATE REMOVAL & VANCE & HINES INSTALLATION

1. Remove the passenger seat by pulling up and away on the back of the seat, Figure 1.
2. Remove the center bolt and the washer holding the seat in place. Save for reuse. Remove the seat.
3. Remove the four bolts and washers holding the rear cowling and strap in place. Save for reuse. Remove the fender cover and strap, Figure 2.
4. Cut the zip tie holding the wires for the lights. Disconnect the four connections to the lights attached to the fender. Disconnect the terminating resistor from the fender. Unplug the security module wire connector from the fender. It may be helpful to label the connectors in order to keep track of them, Figure 3.
5. Remove the four bolts attaching the OEM fender to the frame and set aside. Remove the fender from frame.
6. Remove the connector plug from the fender and reroute with the security connector module, Figure 3. Remove the four cable mounts attached to the underside of the OEM fender. Cut the two zip ties securing the wire harness to the rear fender, Figure 4.
7. Remove the screws securing the turn signals, Figure 5. Detach the turn signals from the rear fender.
8. Remove the tail light from the fender by removing the two screws and two nuts securing the light. Figures 6 & 7.
9. Install the LED light and license plate using the supplied hardware as shown in Figure 8.
10. Install the OEM tail light onto the fender eliminator using OEM hardware, Figure 9.
11. Install the OEM turn signals onto the fender eliminator using OEM hardware, Figure 10.
Note: Ensure the turn signals are installed in the correct orientation
12. Attach the Vance & Hines fender eliminator bracket to the frame using the two supplied M8 x 40mm socket head cap screws. Figure 11. Note: Due to Harley Davidson's manufacturing tolerances, additional spacers may be required in between the bike frame and the fender eliminator to ensure the assembly is properly aligned. Use item #5 as necessary to adjust alignment.
13. Install zip ties to secure the wire harness, Figure 11.
14. Reattach the rear cowling and the strap using the four stock bolts and washers.
Note: Due to Harley Davidson's manufacturing tolerances, additional spacers may be required in between the bike frame and the fender eliminator to ensure proper clearance between fender and light, see Figure 12.
15. Reattach the seat using the remaining stock bolt and washer.

16. Install the passenger seat.

17. Be sure to tighten all the hardware before starting your motorcycle.

18. Check to see that all the lights are working correctly.

FIGURE 1



FIGURE 2



FIGURE 3

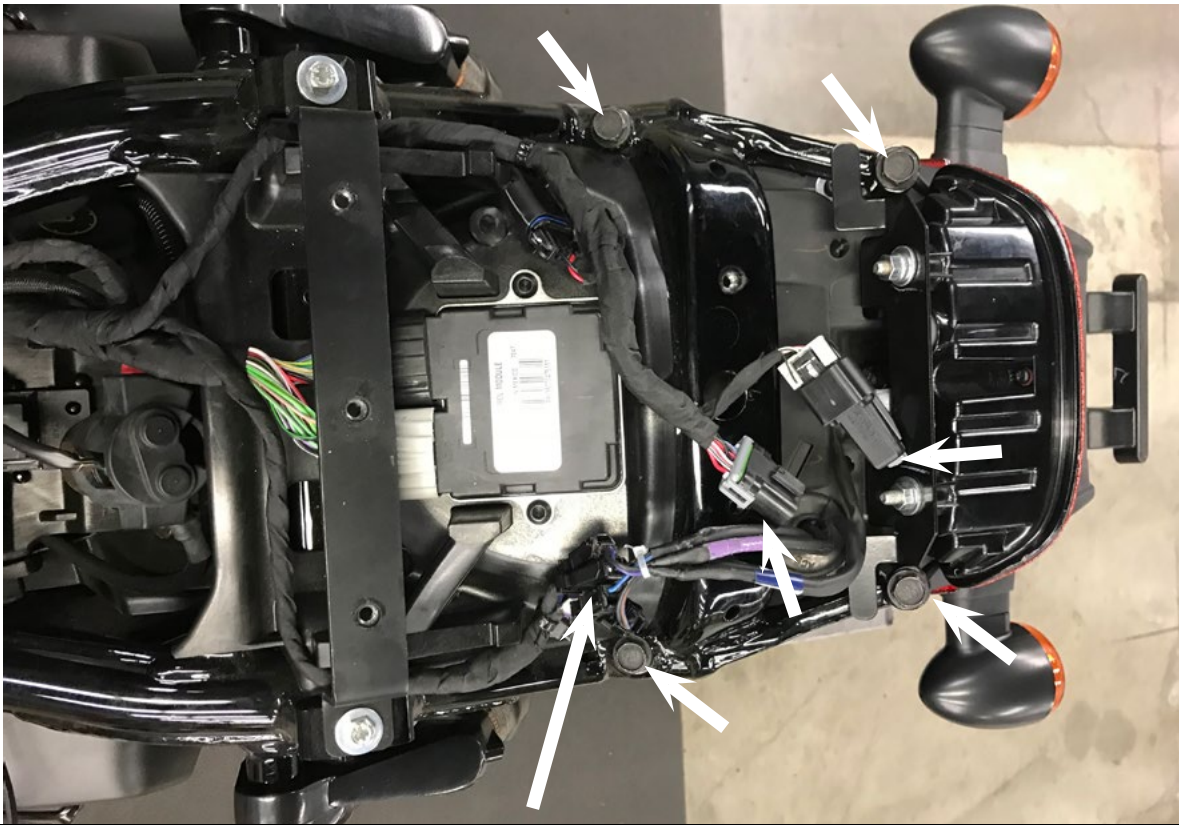


FIGURE 4

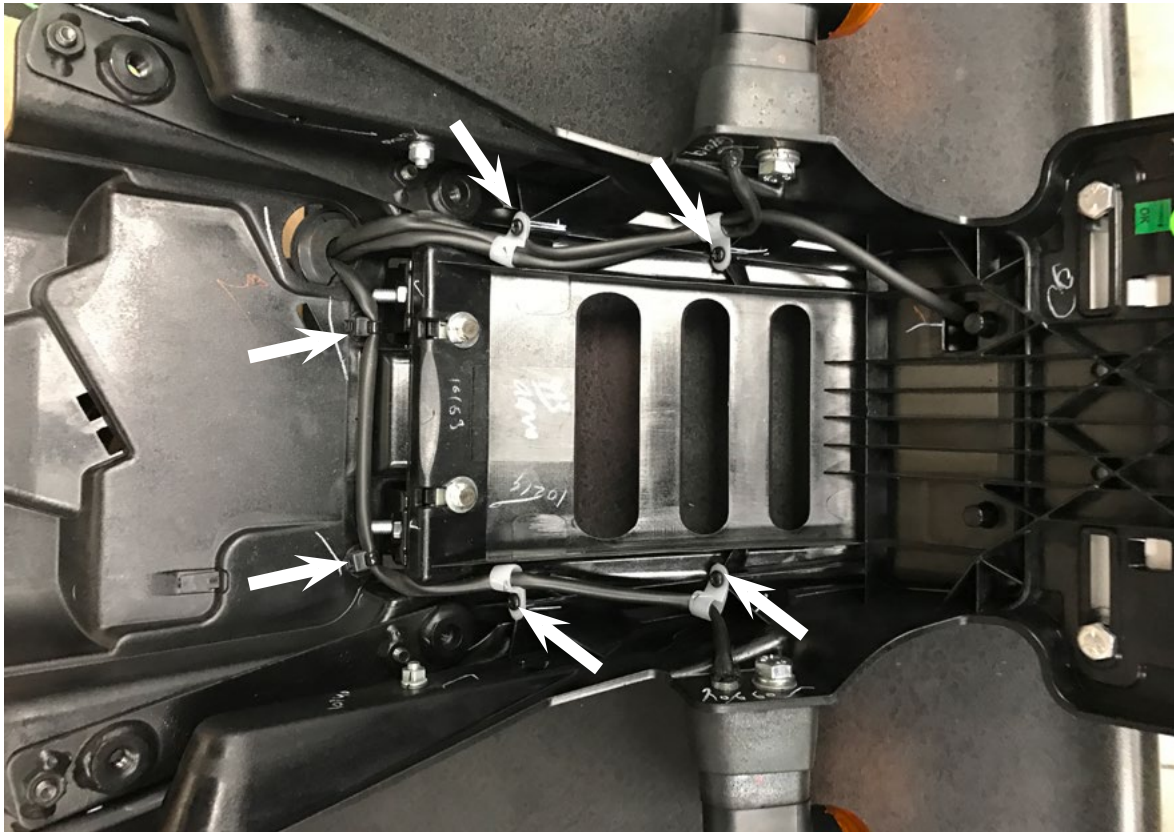


FIGURE 5

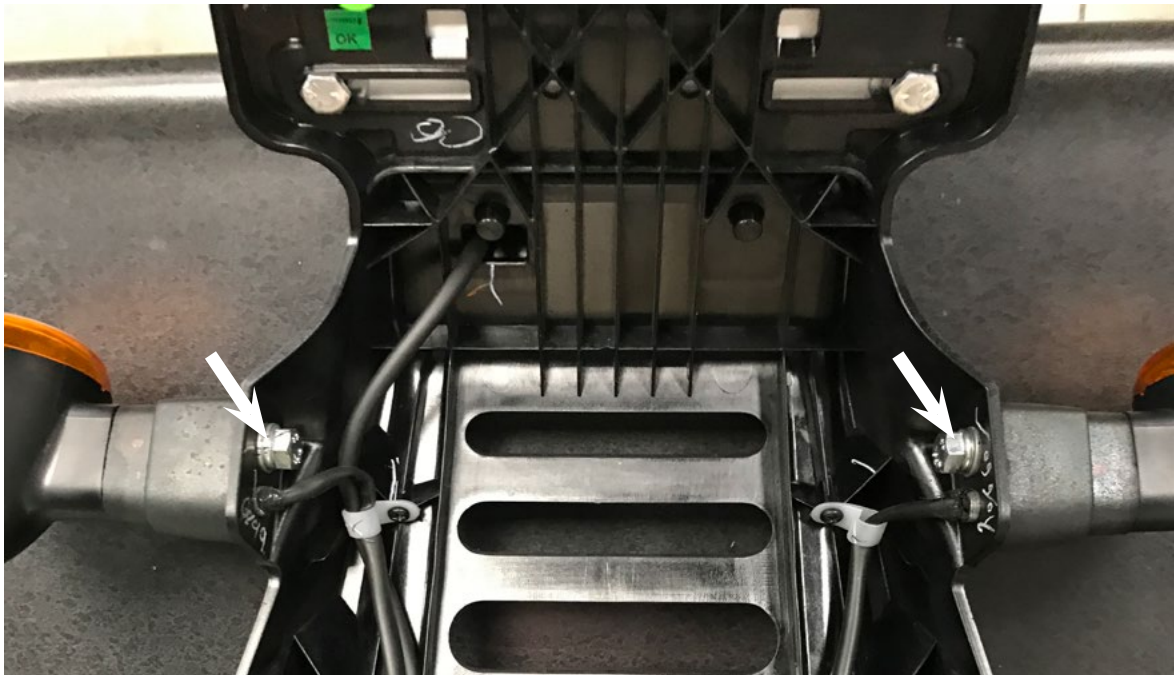


FIGURE 6



FIGURE 7



FIGURE 8

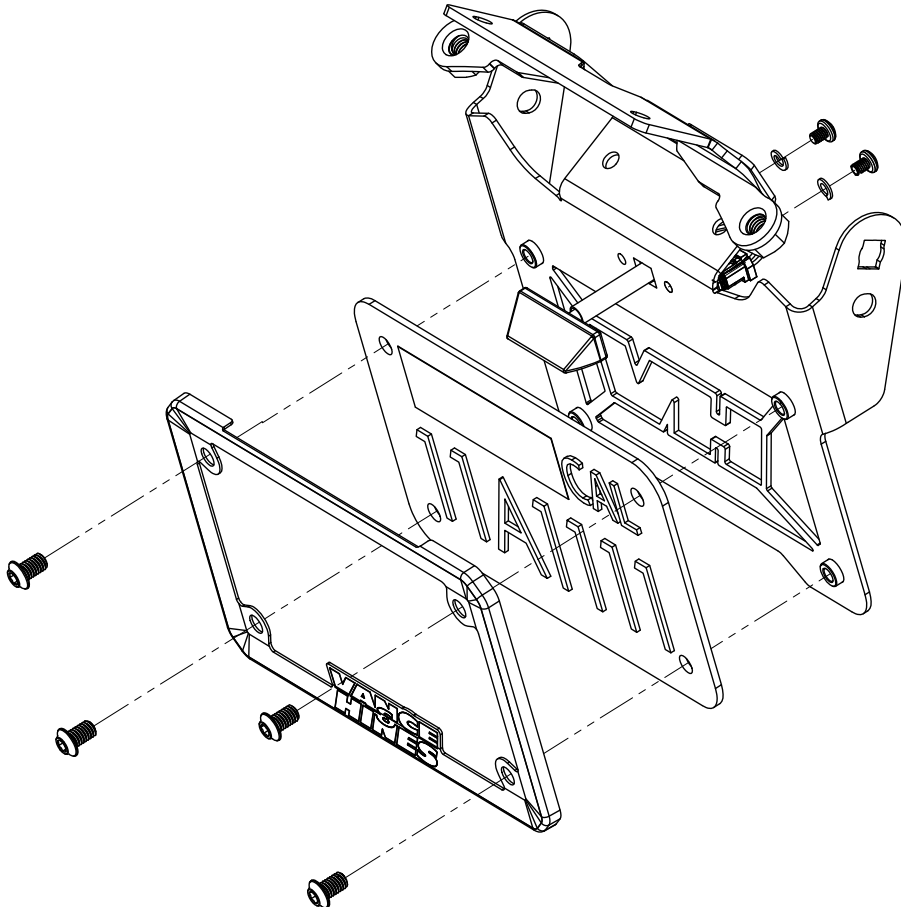


FIGURE 9



FIGURE 10



FIGURE 11



FIGURE 12



Emissions Notice:

In California, in order to meet Air Resources Board emissions requirements, certain aftermarket part applications have been identified as replacements, and others have received ARB Executive Orders. All other emissions related aftermarket parts are for competition use only. A list of replacement parts and EO parts, and corresponding fitment is provided at vanceandhines.com/California.

Warranty:

All Vance & Hines products are warranted against defects in material and workmanship for a period of 90 days. This warranty does not cover discoloration or rust. This warranty shall be limited to the repair or replacement of the product, which may be proven defective under normal use. Vance & Hines will not warranty any system that has been abused, misused, improperly installed or modified.

Dealers or distributors are not authorized to make dispositions binding upon Vance & Hines. Vance & Hines will not be responsible for any labor charges incurred in removing or replacing any system under warranty. A return authorization number and a copy of the original purchase invoice must accompany all returns. Parts returned without a return authorization may be refused.

13861 ROSECRANS AVENUE / SANTA FE SPRINGS, CA 90670
SALES: (562) 921-5388
TECHNICAL: (562) 926-5291
FAX: (562) 802-0110

vanceandhines
.com