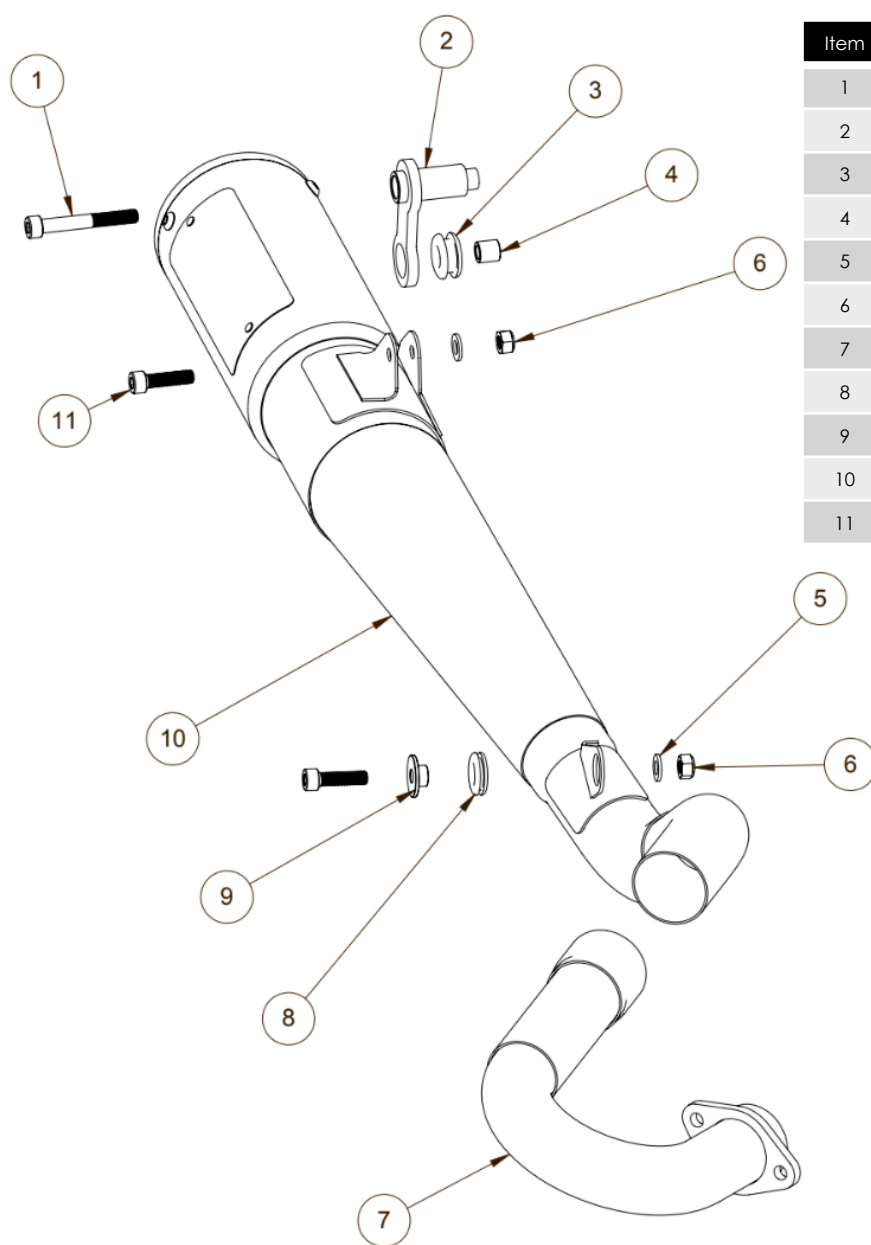


Congratulations, you have purchased the finest exhaust system available for your motorcycle. Your V&H "Race Shop" exhaust is designed and crafted for performance, quality, and style. Please follow the instructions below, check exhaust system for missing or damaged parts, and if you need assistance, please contact our technical support line (317) 852-9057

FOR CLOSED COURSE COMPETITION USE ONLY. NOT INTENDED FOR STREET USE



Item	Part No.	Description	Qty.
1	0135943	M8 – 1.25 x 60mm SHCS	1
2	1317-P	Muffler Hanger Bracket	1
3	A245HW	½" ID Rubber Grommet	1
4	C902	Grommet Spacer	1
5	1140357	M8 Flat Washer Zinc	2
6	A145HW	M8 – 1.25 Locknut	2
7	H317FB	Header Assembly	1
8	9600K22	Rubber Grommet #2	1
9	C207	Machined Aluminum Collar	1
10	H318FB	Exhaust Assembly	1
11	A449HW	M8 – 1.25 x 30mm SHCS	2

STOCK EXHAUST SYSTEM REMOVAL

1. Remove the OEM exhaust system entirely.
2. Insert grommet #1 and the grommet spacer into the circular hole on muffler hanger bracket **(Figure 1)**.
3. Install the exhaust header reusing the OE cylinder head nuts **(Figure 2)**. **Note: Do not tighten at this time**
4. Remove the right side seat bolt. Replace it with the muffler hanger bracket and the supplied M8 – 1.25 x 60mm SHCS **(Figure 3)**. **Note: Do not tighten at this time**
5. Install grommet #2 to the mid pipe bracket welded on exhaust system, and insert the machined aluminum collar from the side closest to motorcycle **(Figure 4)**.
6. Spread the muffler tabs slightly to go over grommet previously installed on the muffler hanger bracket. Secure the exhaust to muffler hanger bracket using the supplied M8 bolt – 1.25 x 30mm SHCS (1), M8 flat washer (1), and M8 locknut (1) **(Figure 5)**. **Note: Do not tighten at this time.**
7. Mount the tail pipe using the supplied M8 – 1.25 x 30mm SHCS (1), M8 flat washer (1), and M8 locknut (1) through the frame and mid pipe bracket **(Figure 6)**, while mating with the header assembly **(Figure 7)**.
Note: Use high-temp anti-seize (not supplied) at the slip joint; Do not tighten at this time
8. Now tighten the stock cylinder head nuts, including all supporting hardware previously covered in steps 4, 6, and 7. **Note: Torque to 18 ft/lbs.**
9. Clean all fingerprints from the exhaust using a contact cleaner (or other non-flammable cleaner).
Fingerprints will leave stains on the pipe once the motorcycle is started.
10. You are now ready to start your motorcycle.
11. After initial ride, re-torque barrel clamp and all hardware as needed.

EXHAUST CARE

1. When installing a new set of stainless pipes, make sure your hands are clean and free of oil. After installation, thoroughly clean pipes with a soft cloth and cleaning solvent that will leave no residue (acetone glass cleaner, alcohol, etc.) before starting the Motorcycle.
2. It is considered normal for stainless steel exhaust systems to discolor due to heat.
3. High performance engine tuning utilizing a dyno will likely result in severe discoloration.
4. Avoid long periods of idling as this can cause discoloration. Intake leaks can cause the engine to run lean and overheat, this could lead to discoloration.
5. Make sure there are no exhaust leaks at the junction of the exhaust pipes and cylinder head. We recommend replacing gaskets if they are worn.

Figure 1



Figure 2



Figure 3



Figure 4



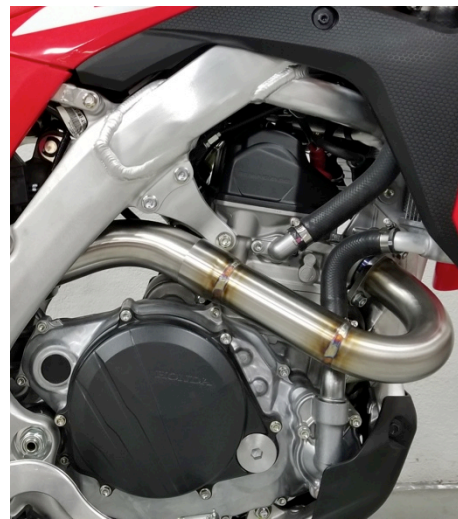
Figure 5



Figure 6



Figure 7



Emissions Notice:

In California, in order to meet Air Resources Board emissions requirements, certain aftermarket part applications have been identified as replacements, and others have received ARB Executive Orders. All other emissions related aftermarket parts are for competition use only. A list of replacement parts and EO parts, and corresponding fitment is provided at vanceandhines.com/California.

Warranty:

All Vance & Hines products are warranted against defects in material and workmanship for a period of 90 days. This warranty does not cover discoloration or rust. This warranty shall be limited to the repair or replacement of the product, which may be proven defective under normal use. Vance & Hines will not warranty any system that has been abused, misused, improperly installed or modified.

Dealers or distributors are not authorized to make dispositions binding upon Vance & Hines. Vance & Hines will not be responsible for any labor charges incurred in removing or replacing any system under warranty. A return authorization number and a copy of the original purchase invoice must accompany all returns. Parts returned without a return authorization may be refused.